

ART 2650, Introduction to Design Process and Programming
Fall Semester 2020
Online

Matthew Ziff, Associate Professor, Area Chair
M. Arch, NCIDQ, Architect

Model Making For Designers

Study Models vs. Finished Models

Study Models:

- exploration models: done for the designer (you) to discover new things (things you did NOT know prior to making the model).
- not to 'present' the finished design idea

Finished Models:

- Presentation models: done to ‘present’ a finished project to a client.
- These do NOT tell the designer (you) new things: they are supposed to ‘sell’ your idea to the client.

Google 'architecture model making'

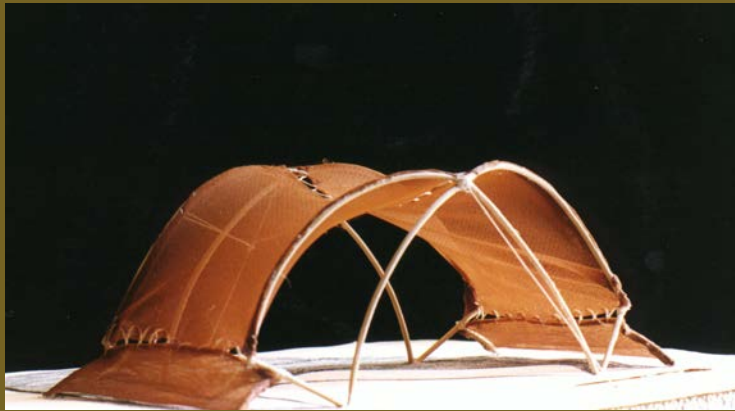
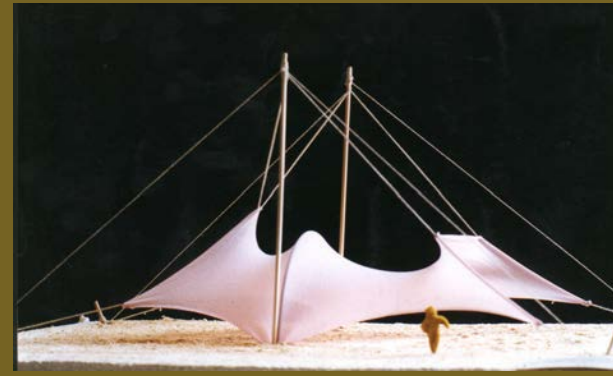
(click on 'images')

Google 'interior design model making'

(click on 'images')

- to see many examples of both kinds of models.

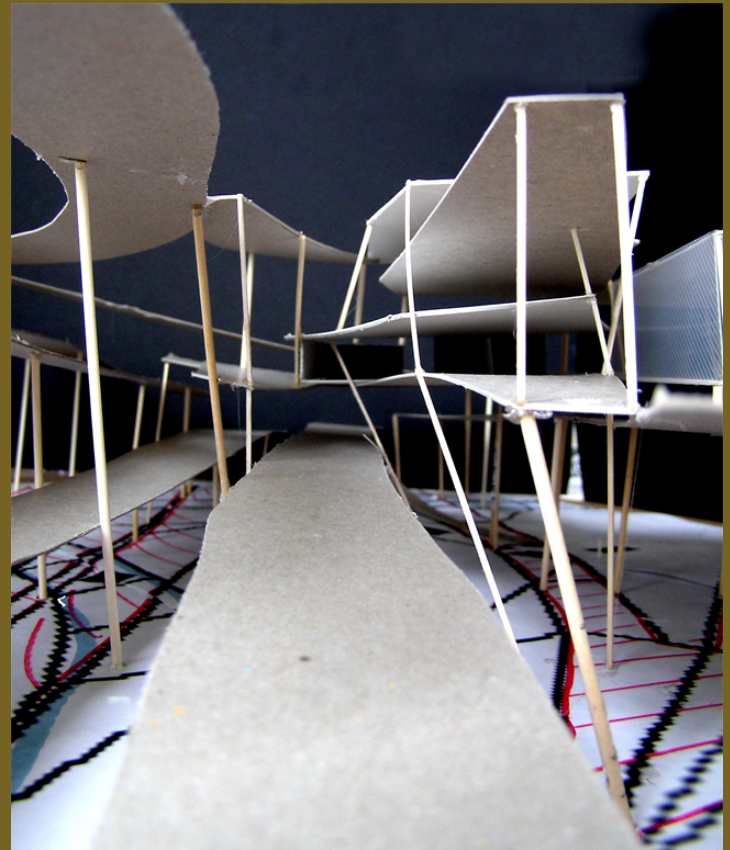
Physical models for interior design: models simulate various kinds of construction & various kinds of spaces



Physical models are valuable to designing people

- Physical models appeal to our senses in ways that are fundamentally human.
- Physical models are ‘real’ in ways that are unlike digital models.
- Physical models raise possibilities that other modes do not.

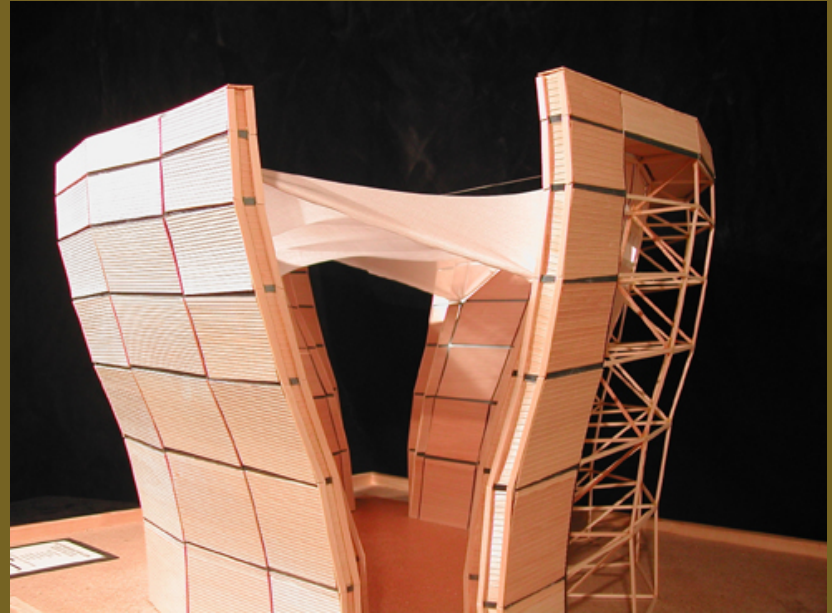
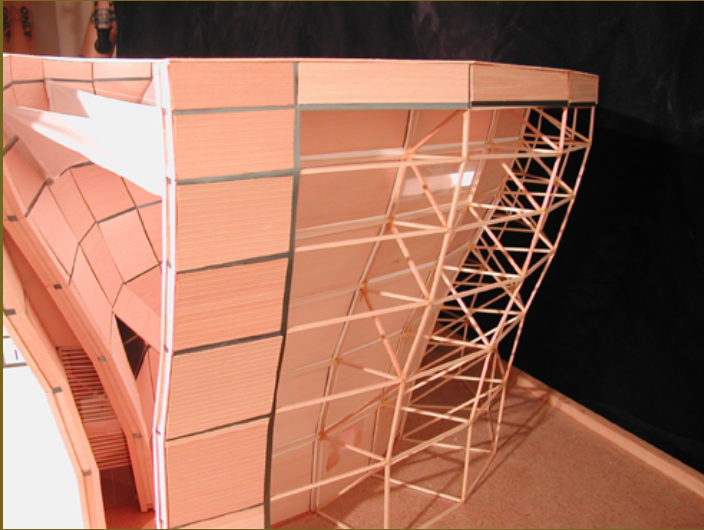
paper models of building sized spaces



simple form, surface, and opening model



wood models of wall, structure



Showing a fairly realistic space and objects



delicate pieces, massive pieces, planes, lines:
for a model to be engaging, interesting, there must
be a variety of contrasting pieces



A physical model needs to contain something that is visually interesting!

- Physical models need to contain pieces that are:
 - surfaces and lines, large and small, thick and thin, open and closed, monochrome and polychrome.
 - The level of detail, or visual articulation, can suggest that quality in the actual, built, space, even though it is not going to be exactly the same in the built space as in the model.

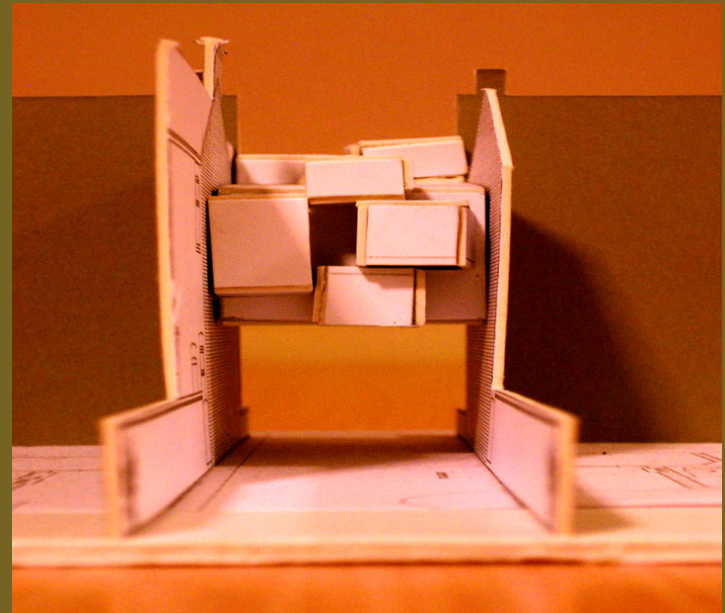
simple models
a simple model is like a short phrase
“hi what’s up”

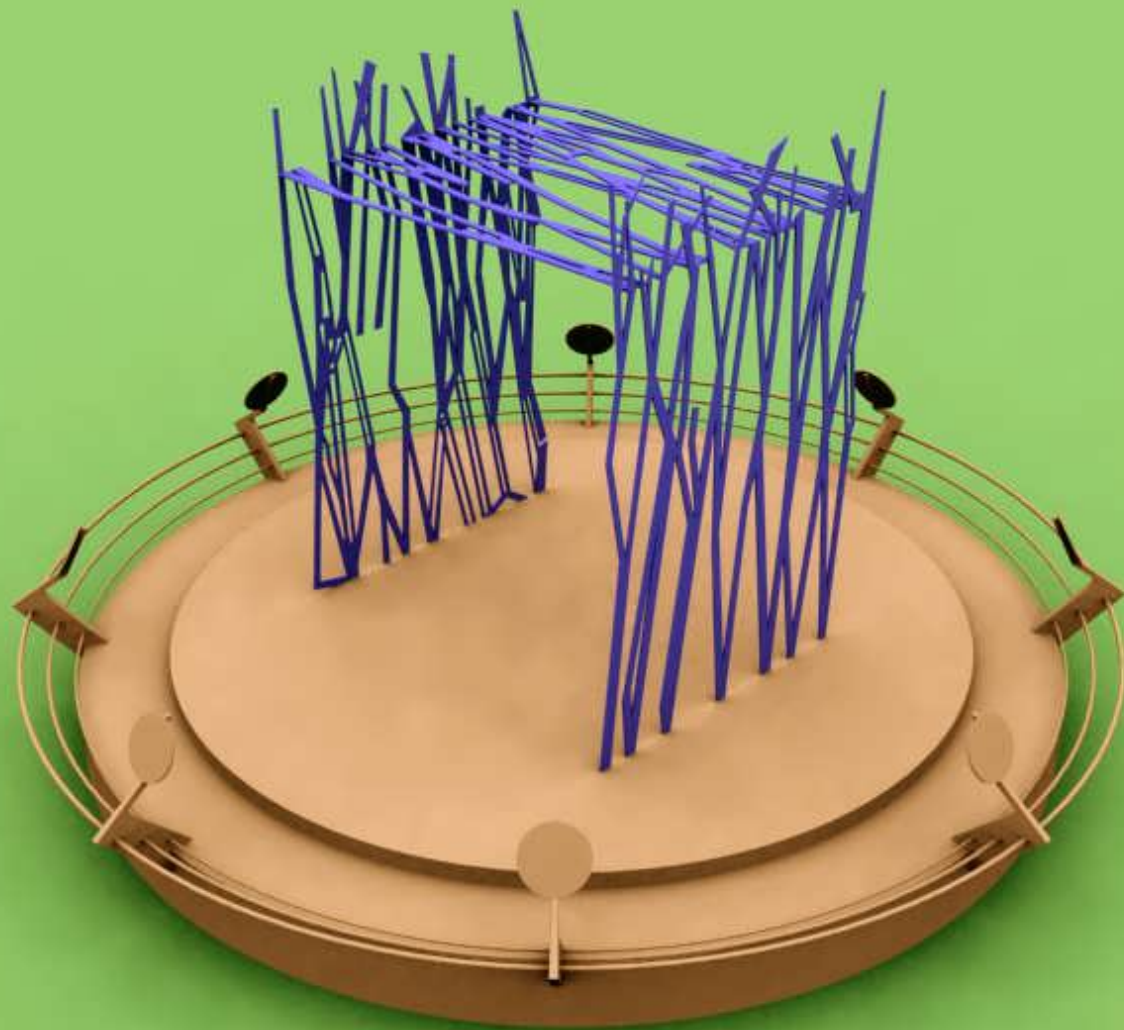


photo collages



a massing study

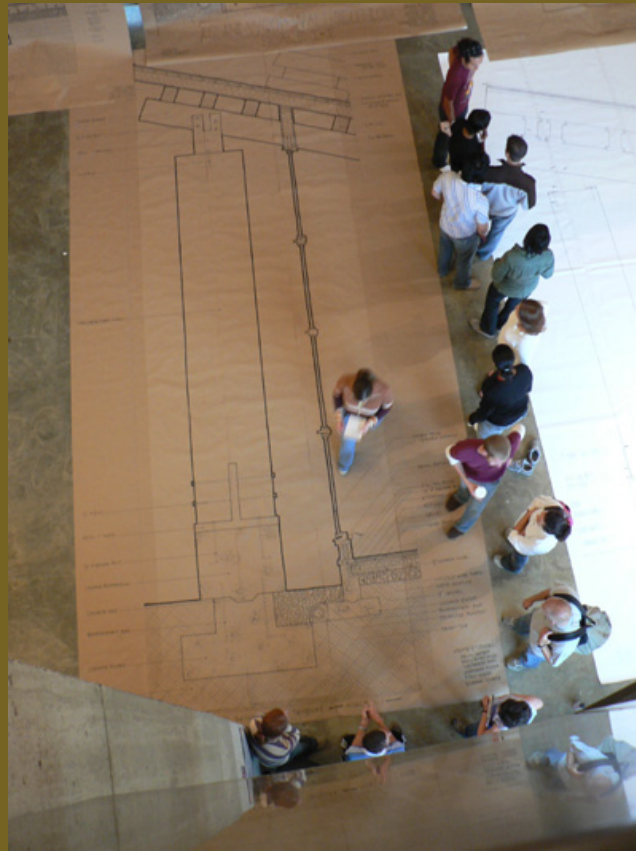




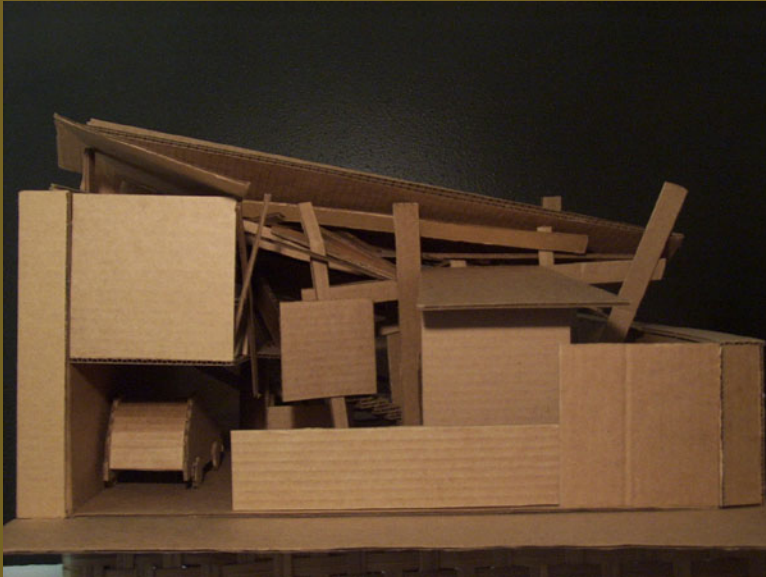
A more complex model is like a sentence:
“this is going to be a space with repeated elements, each of which is a
geometric form, connecting to a base that is a contrasting solid”



a very large vertical section drawing



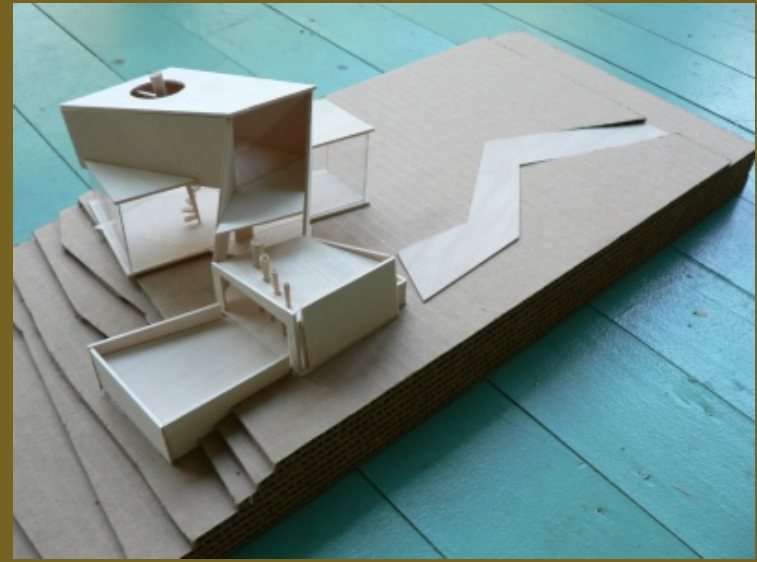
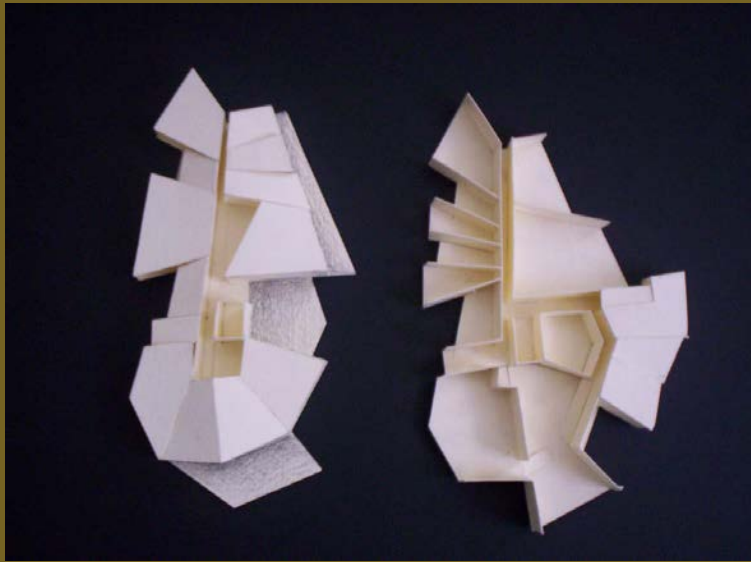
These models contain many pieces.
This is why the models are interesting.

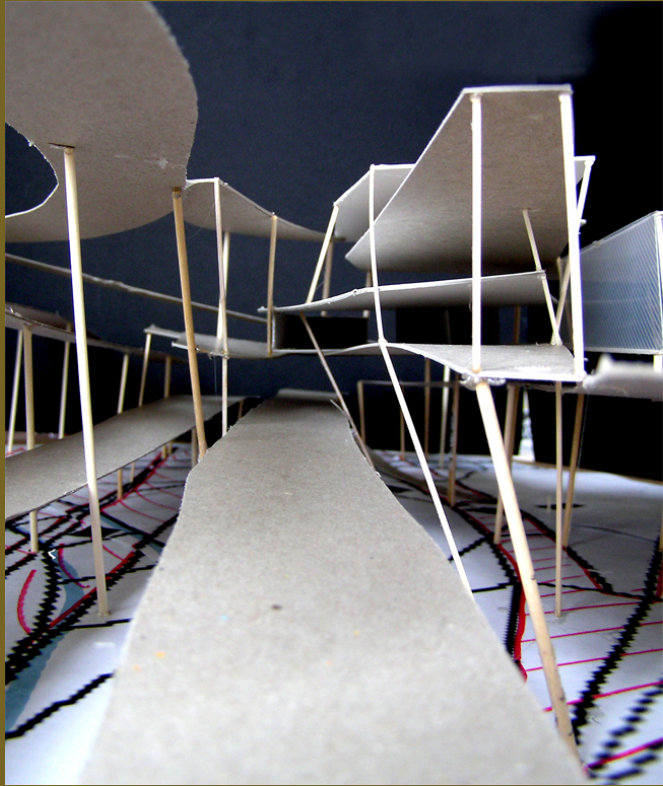
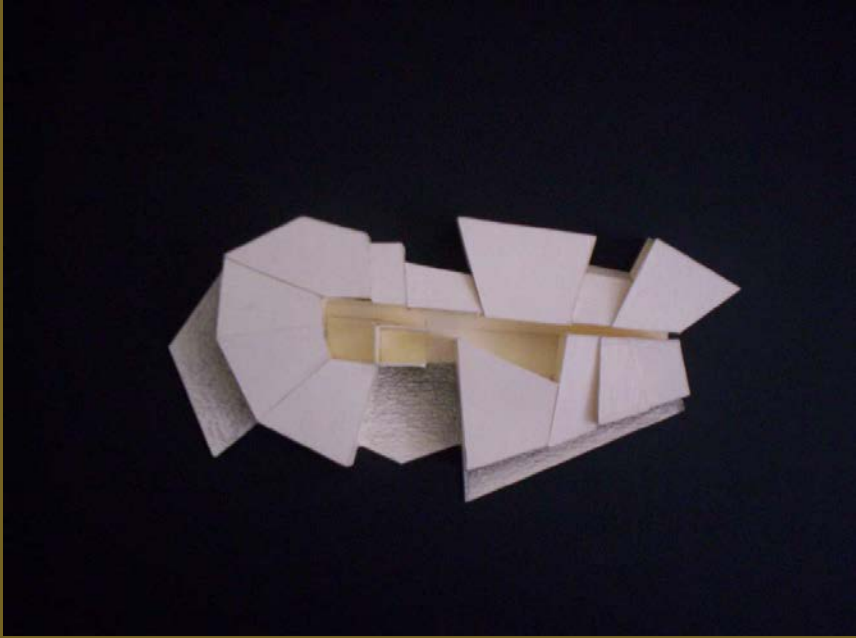


a very 'realistic' interior model,(right) vs.
a 'suggestive' , or possibility-raising model (left)

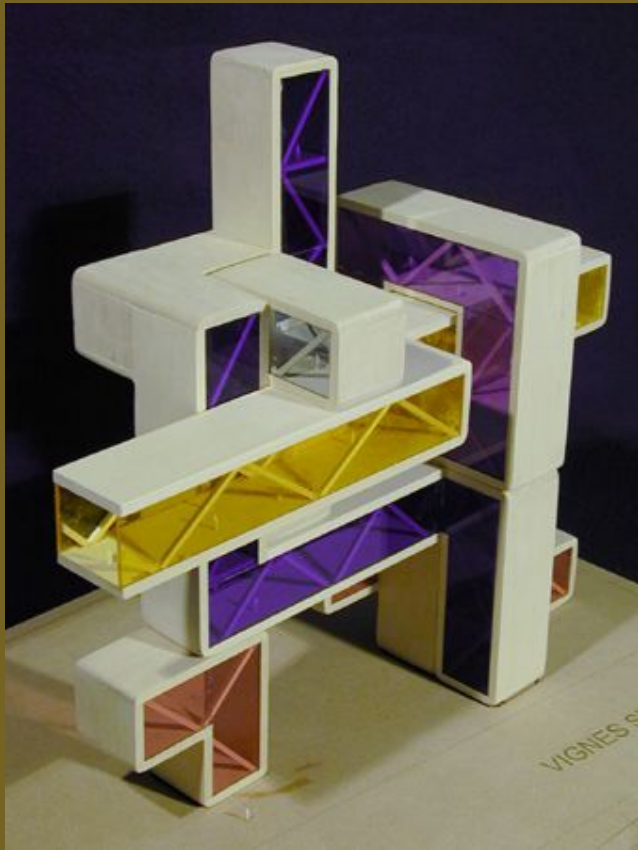


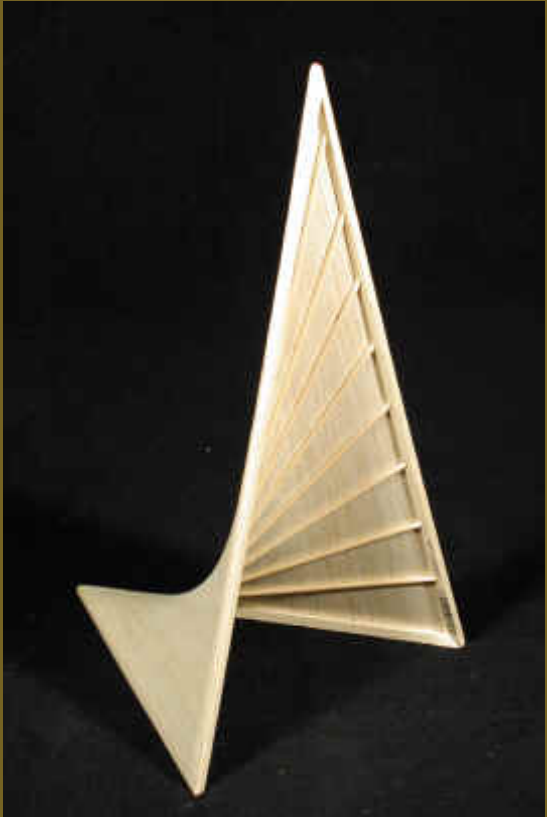
models made of heavy white paper, grey chipboard
clean, simple materials can create a coherent and unified model.





strong color against white field
regular, geometric, repetition of pieces

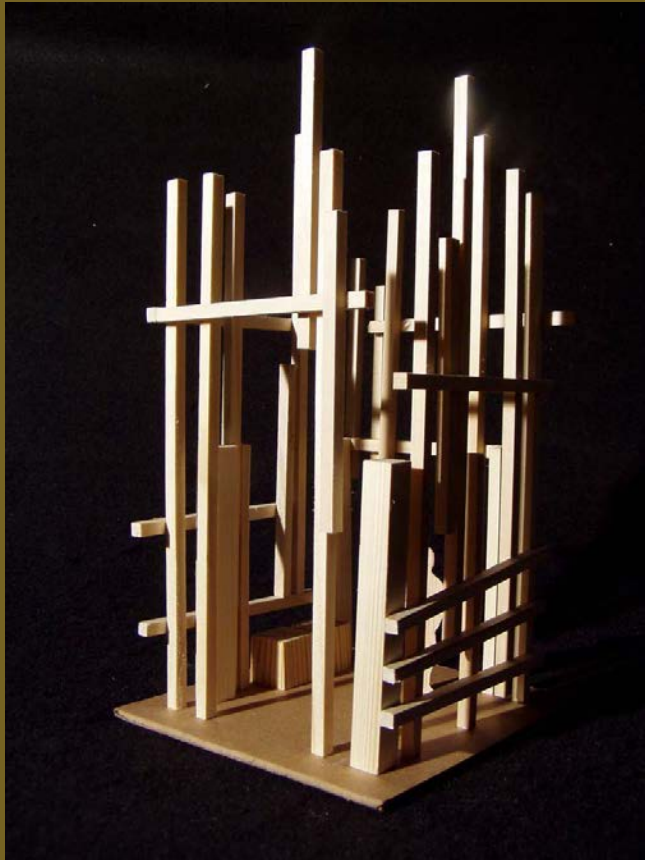


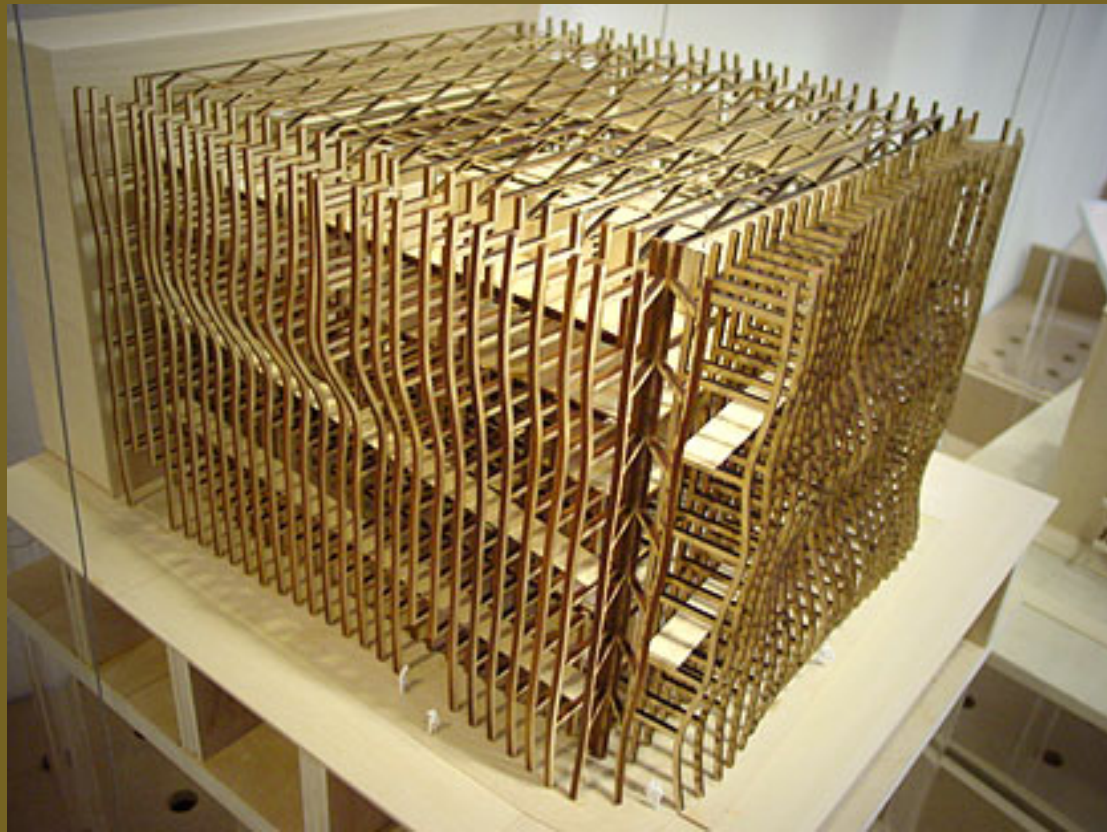


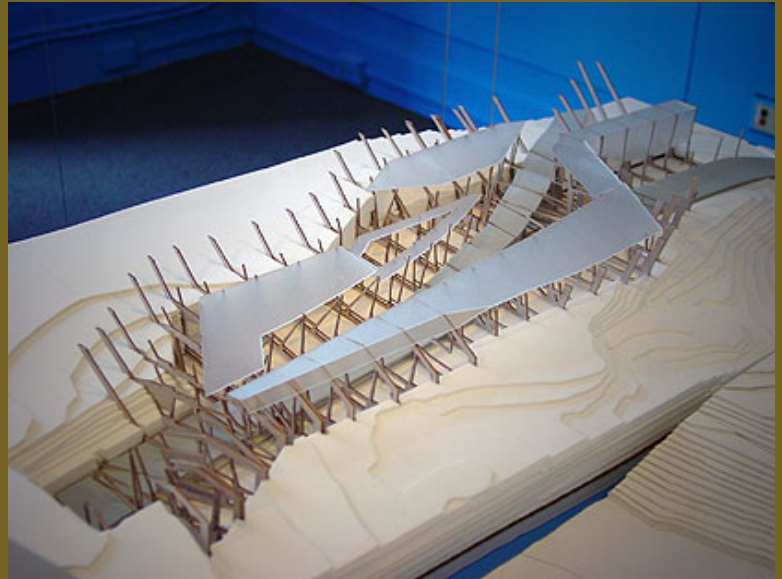
'Rapunzel': a wood construction in a building atrium space



delicate pieces of wood, and wood & plexiglas,
carefully assembled



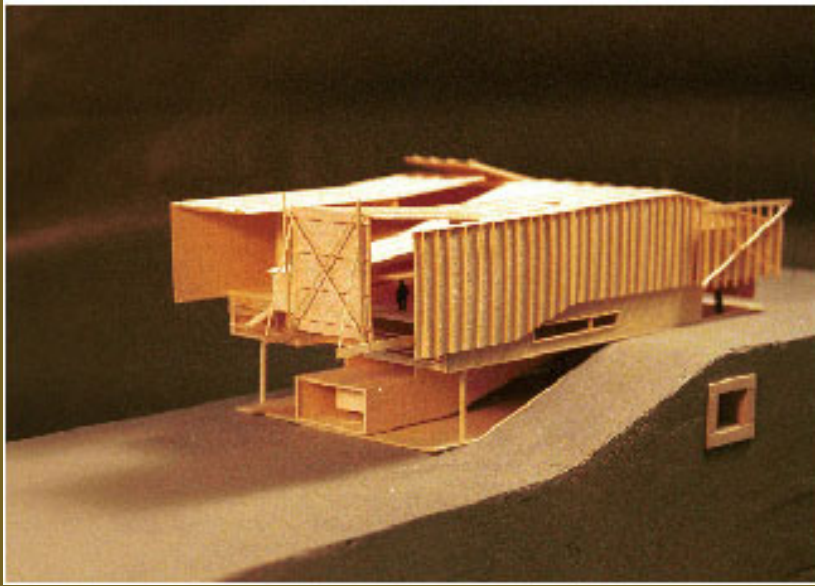


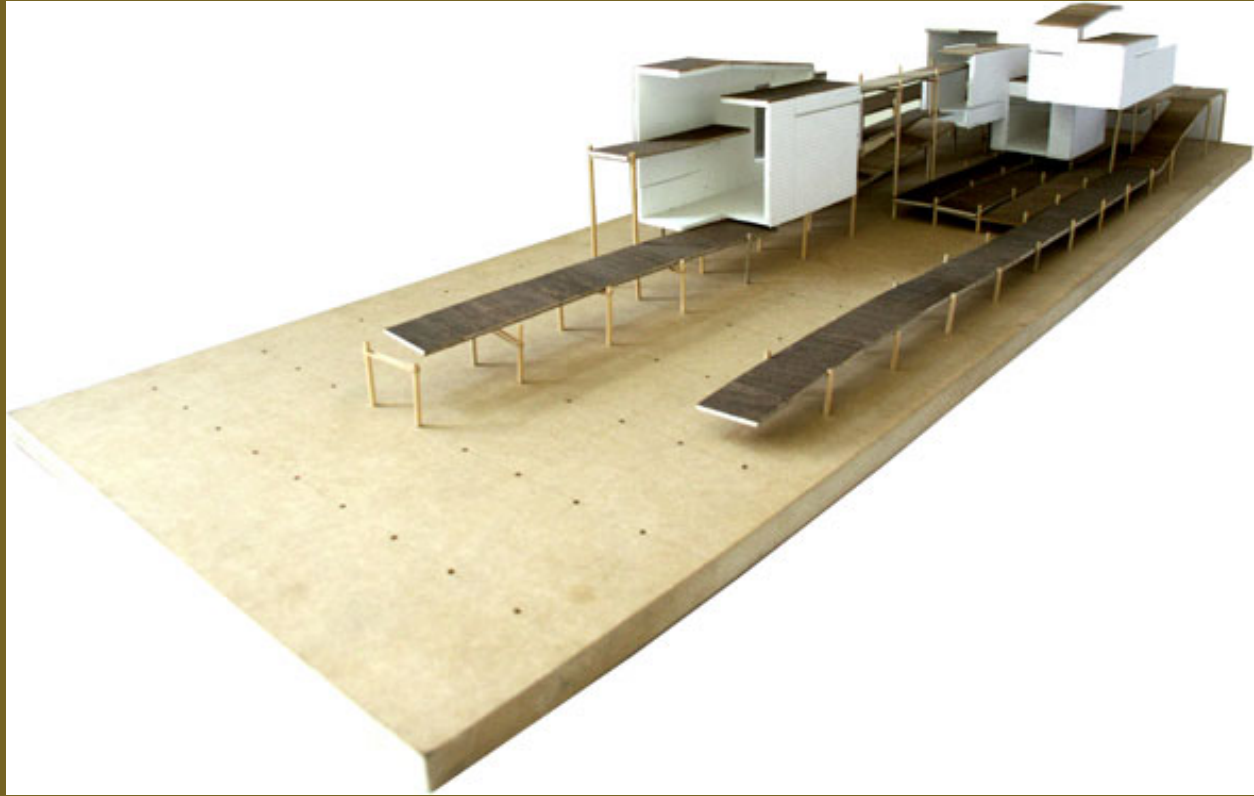


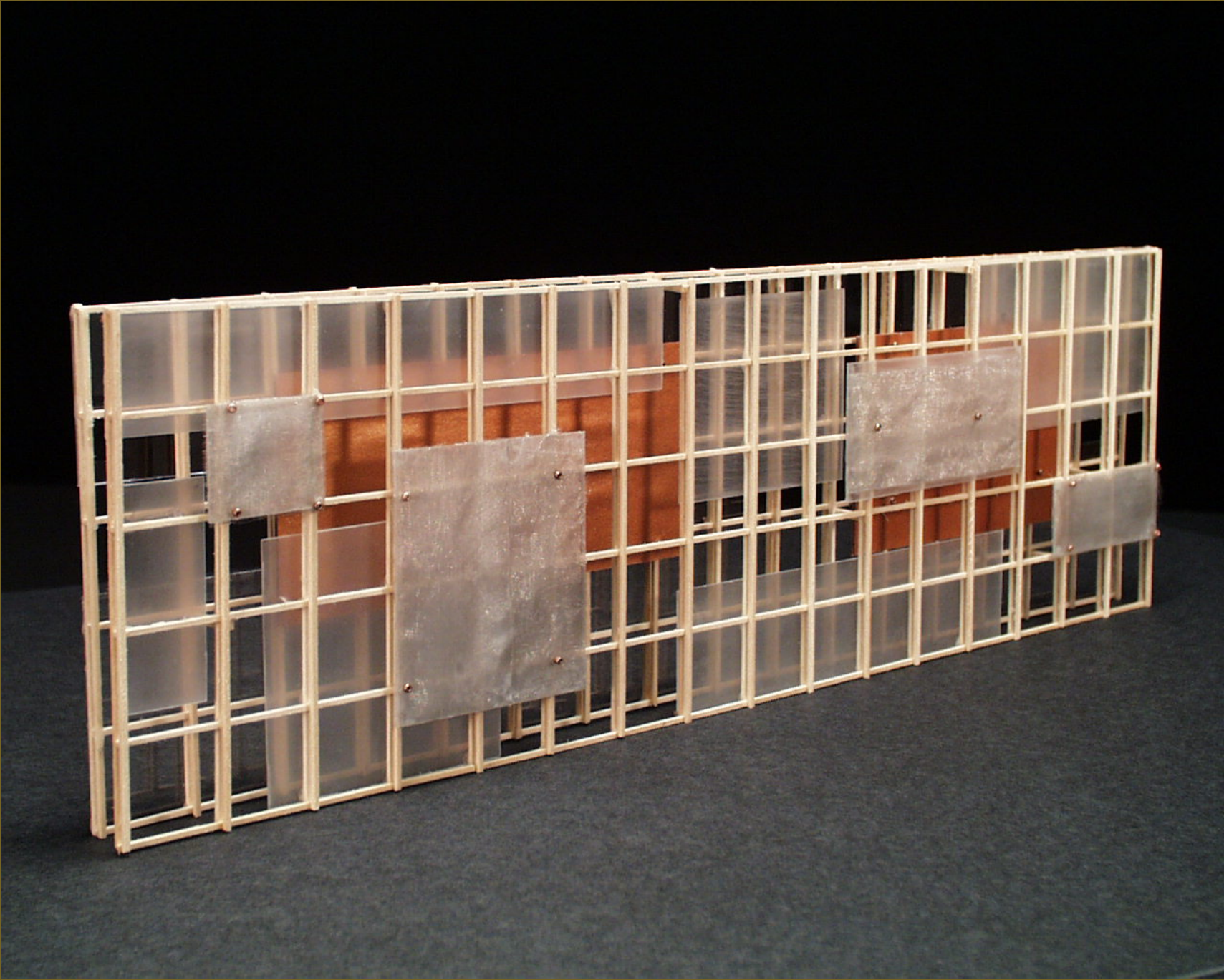


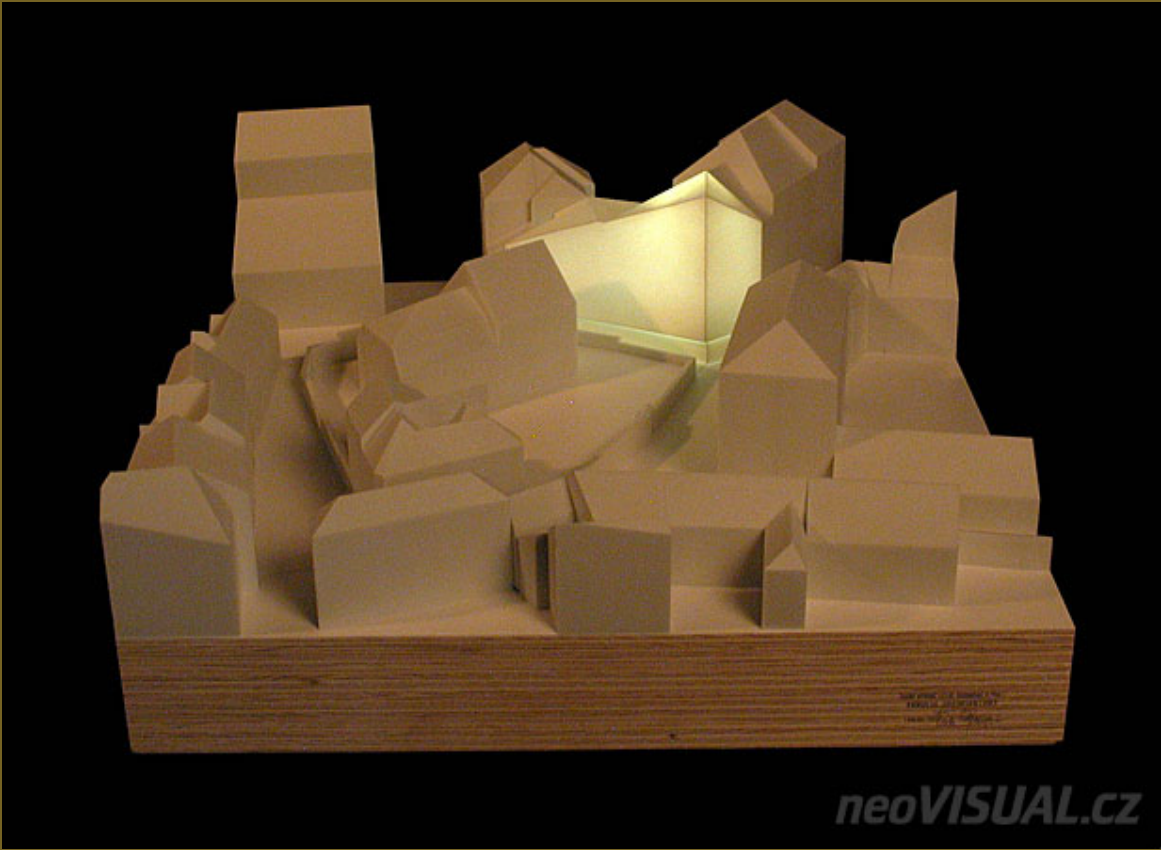
heavy white paper, balsa wood 'sticks'







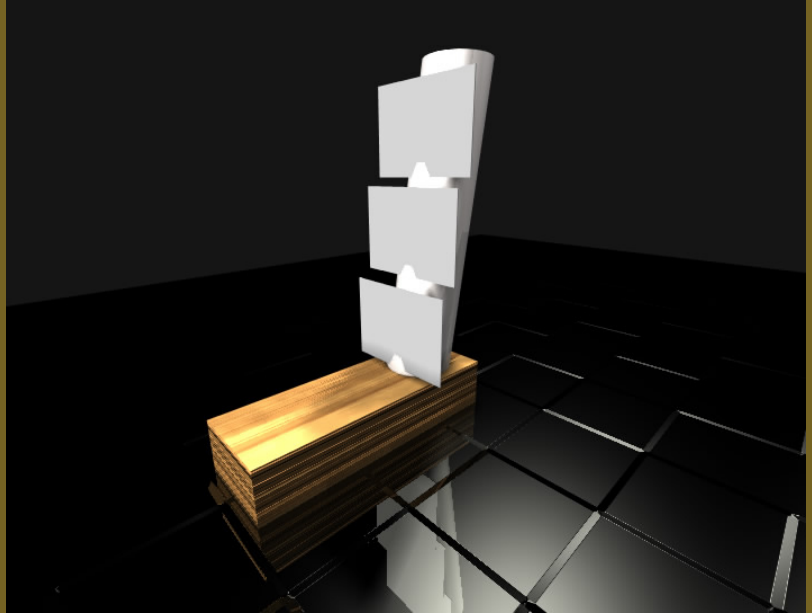
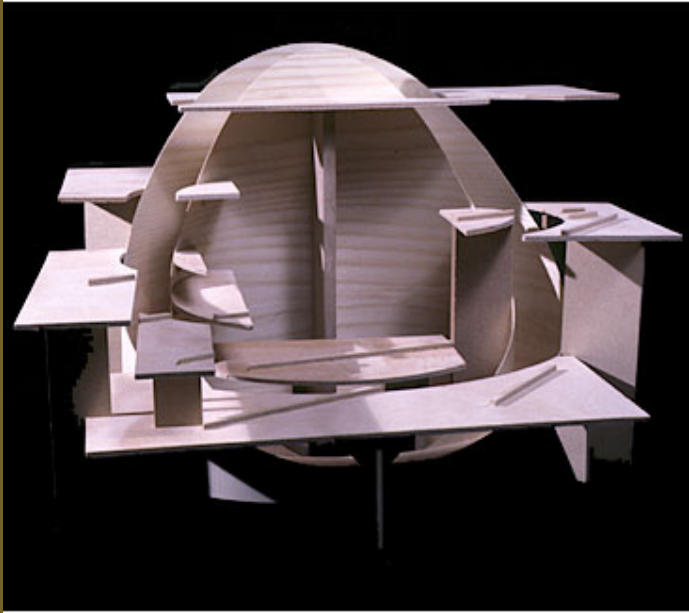




neoVISUAL.cz

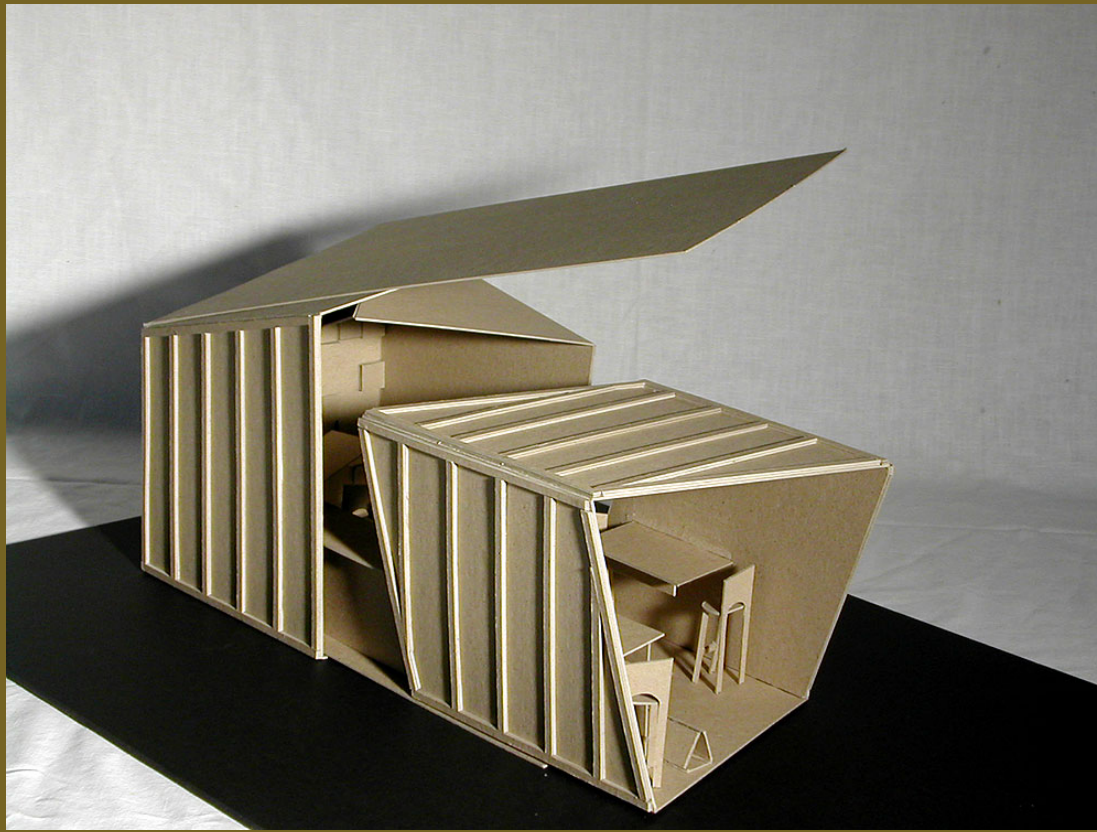






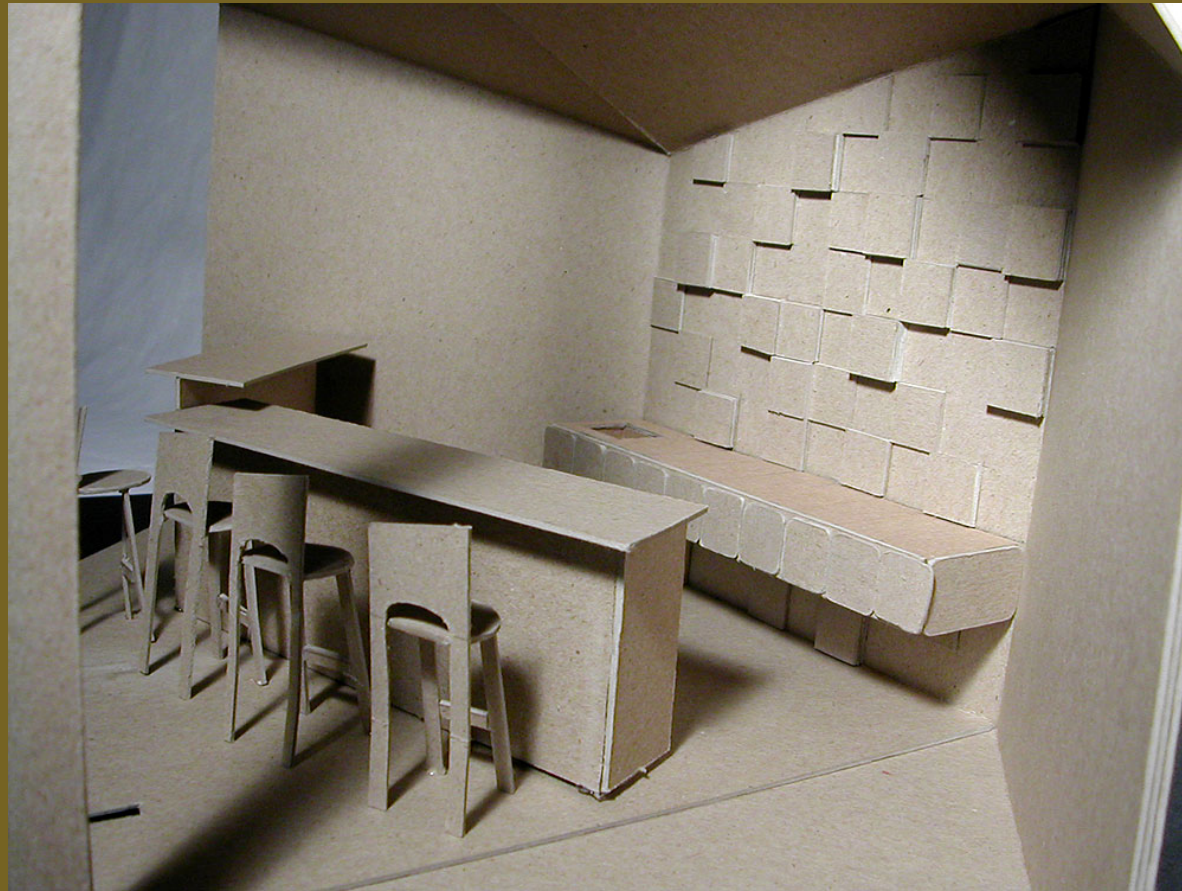
“A Mobile Coffee Shop”

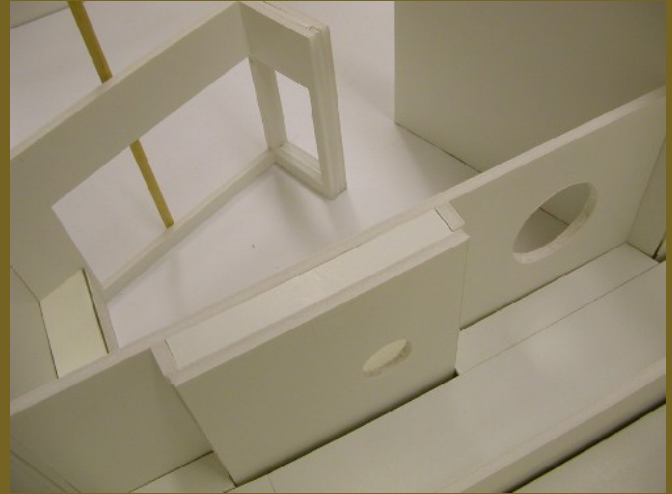
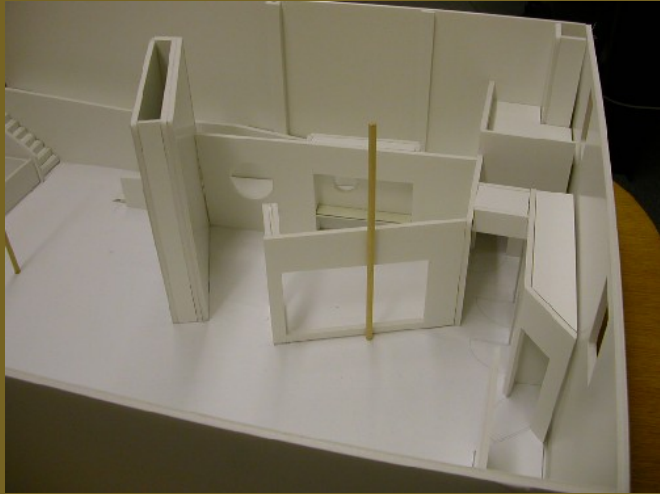
Michelle Rivera, Ohio University Interior Architecture, Sophomore Studio, 2002



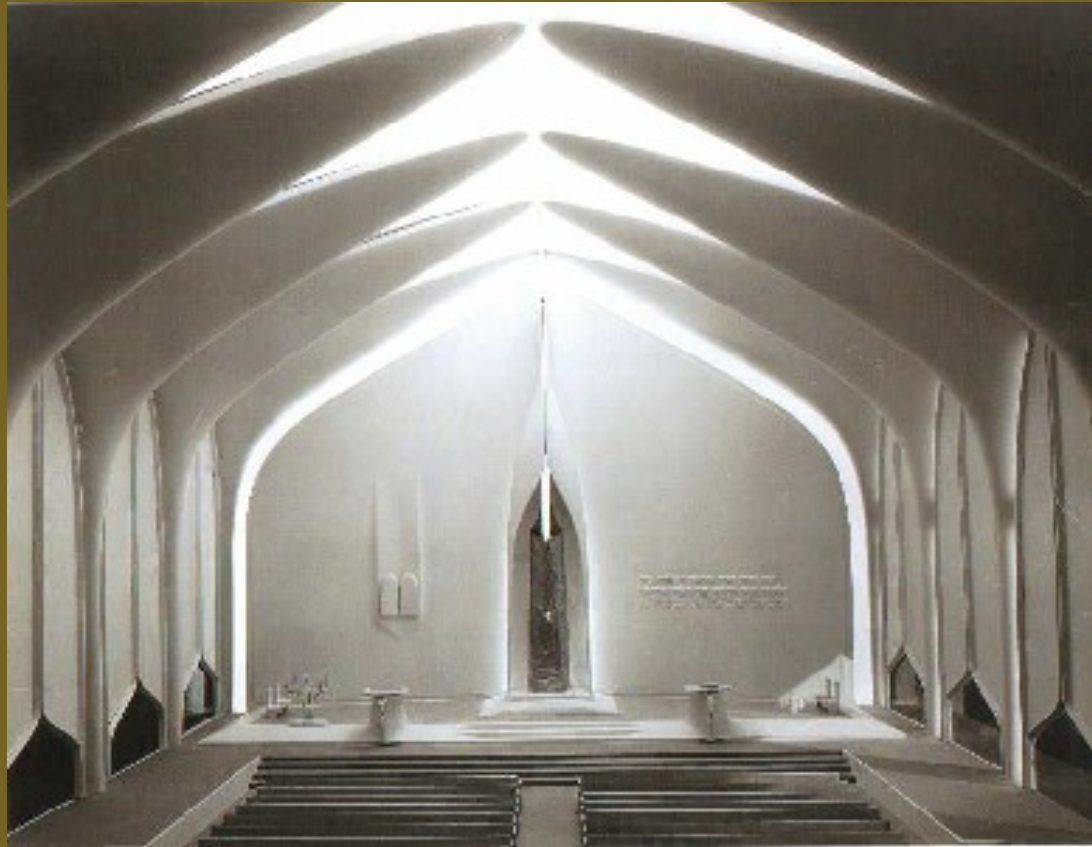
“A Mobile Coffee Shop”

Michelle Rivera, Ohio University Interior Architecture, Sophomore Studio, 2002

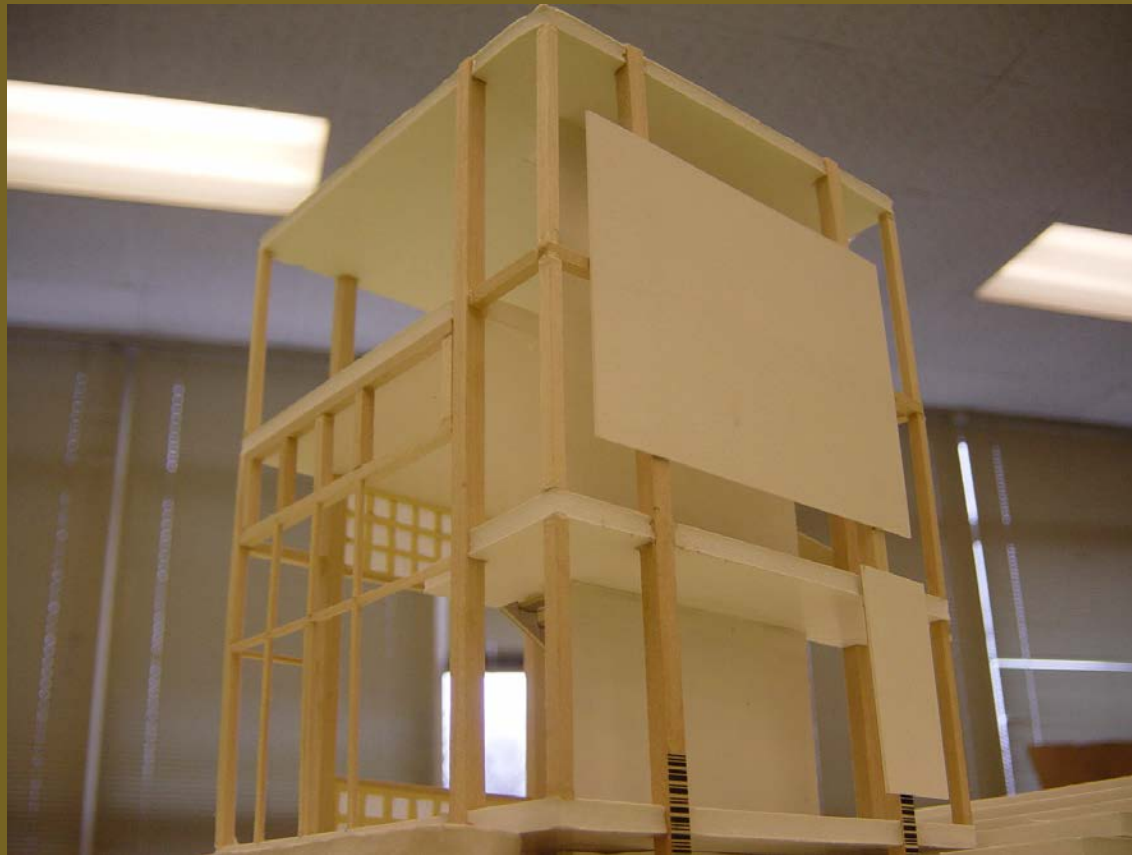


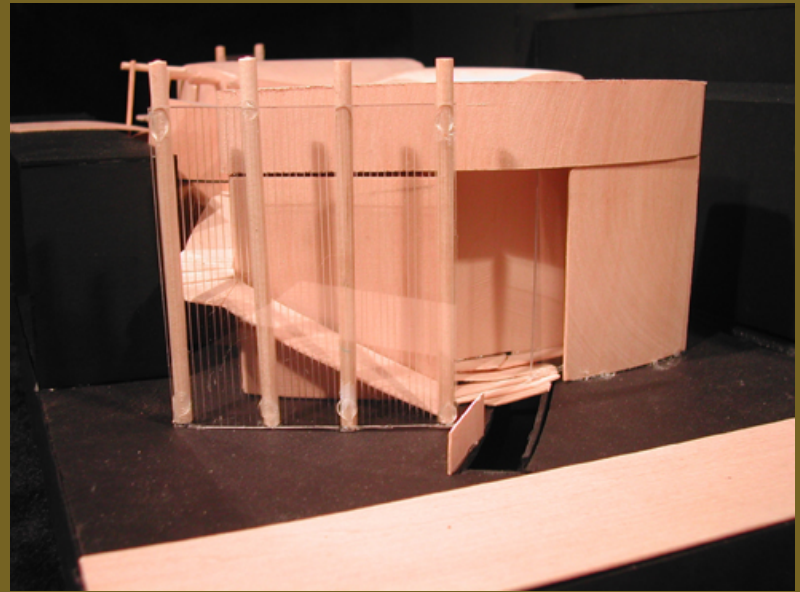
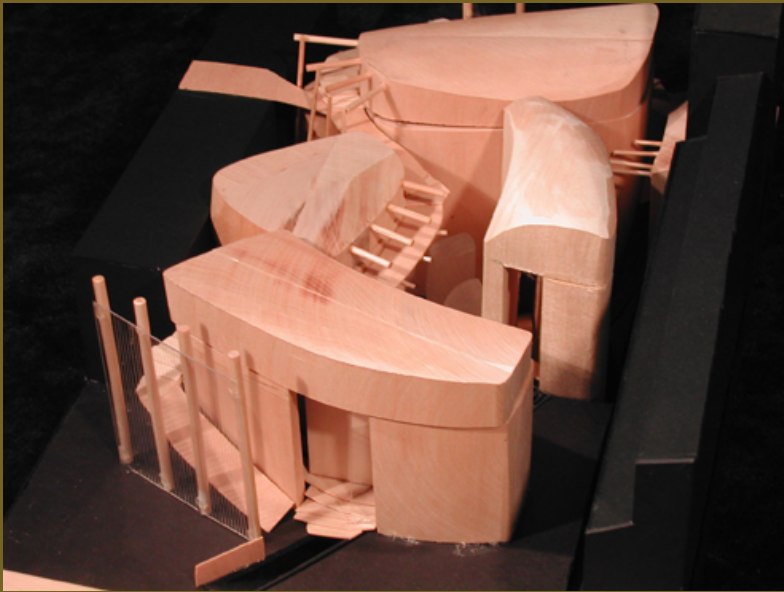


simulating lighting conditions in white model



showing primary components, structure, order









A typical model showing the exterior shell of a building.
(model by Technical Models Ltd., UK)

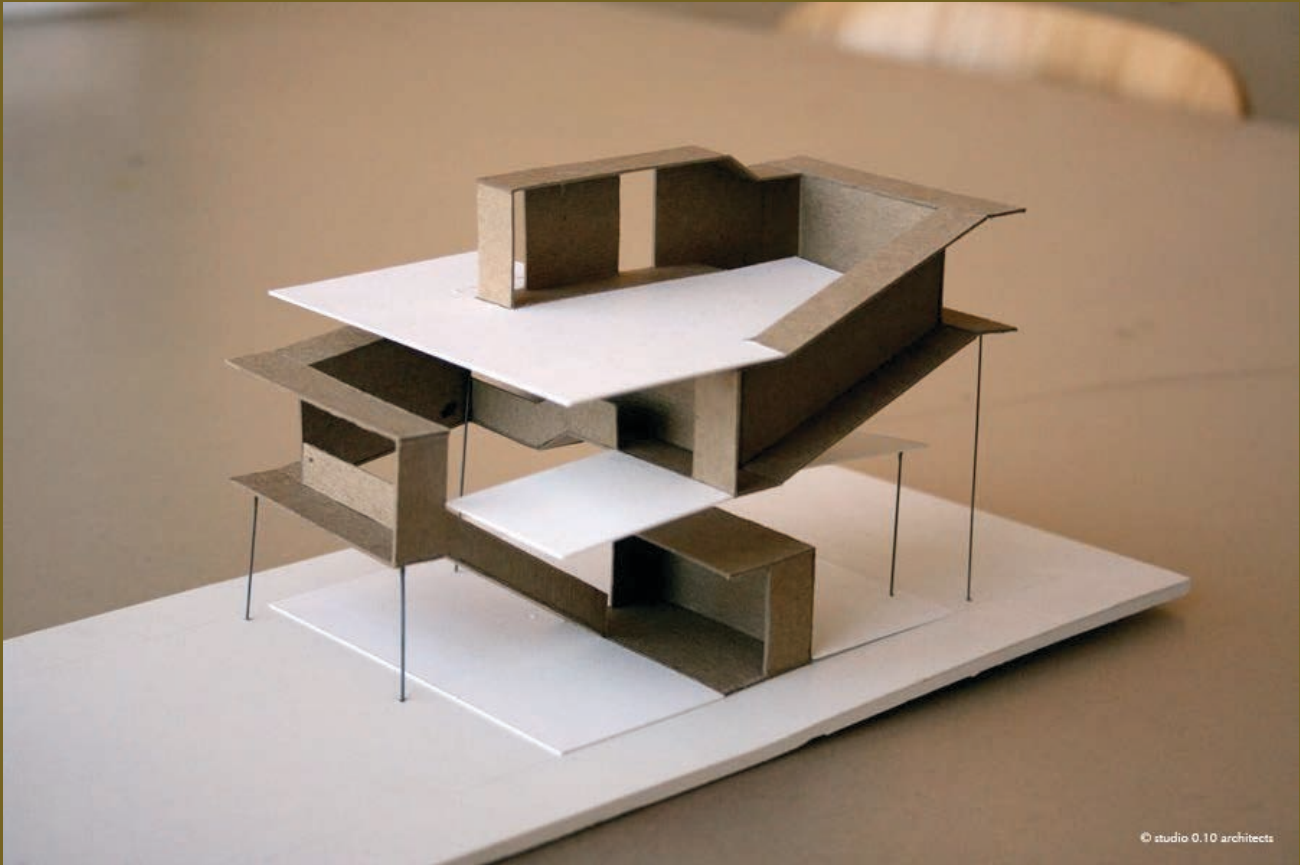




The house features a two-storey custom wood shelving unit that wraps from the first-floor office space to the second-floor living room. The unique shelving showcases the client's vast library and ceramic art collection and unites the main entry with the second-floor living spaces. Cube architects.

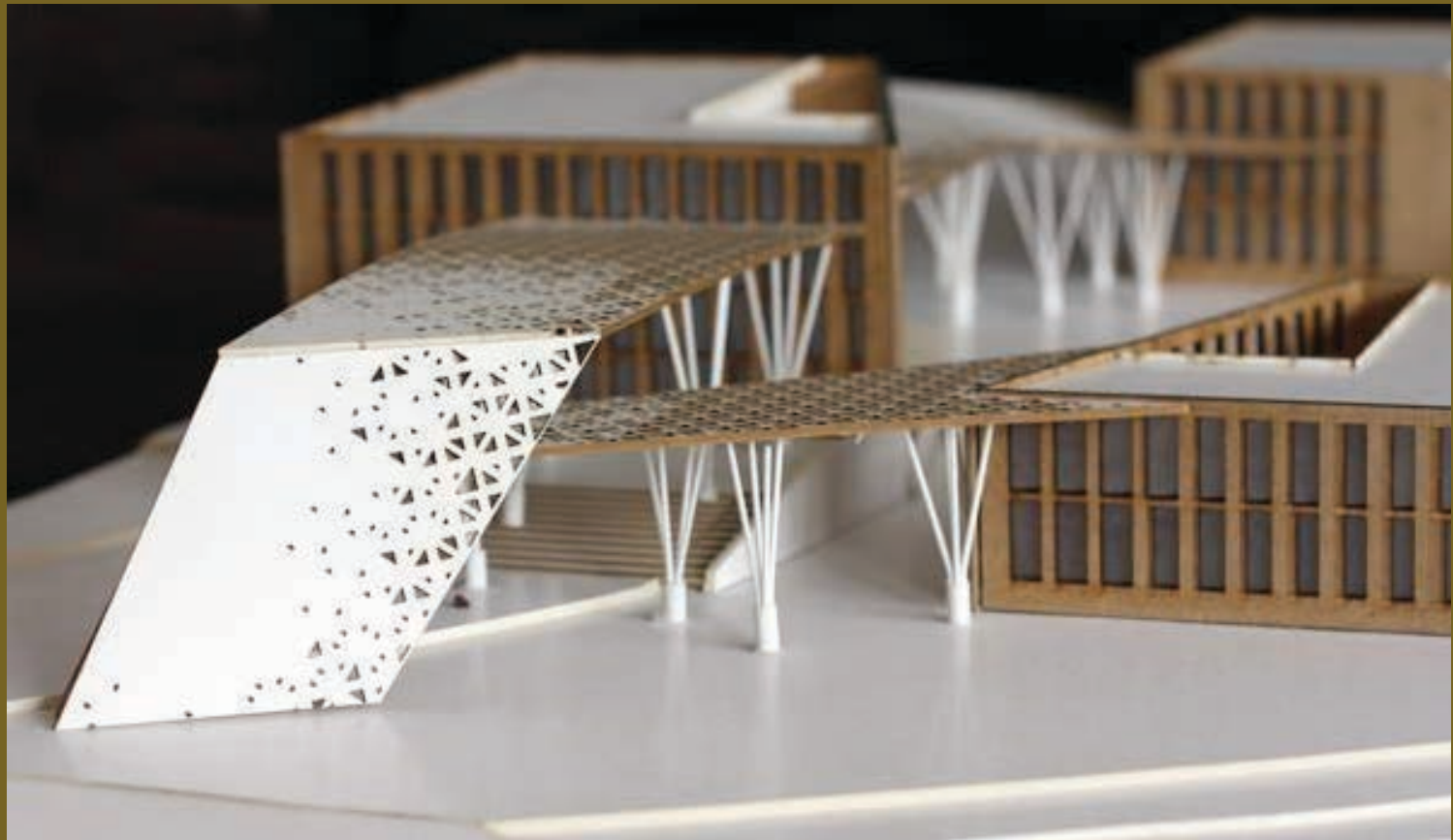


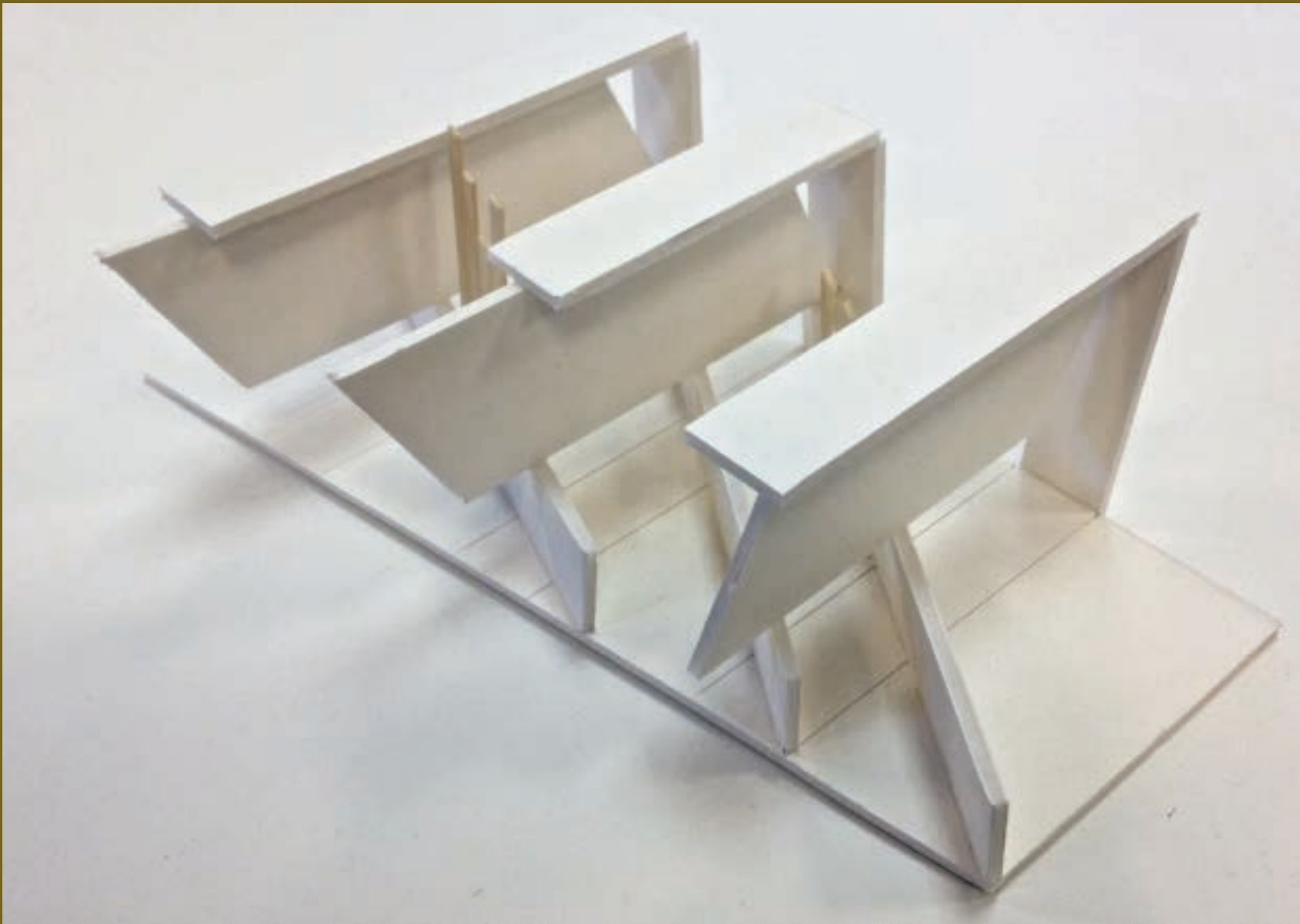


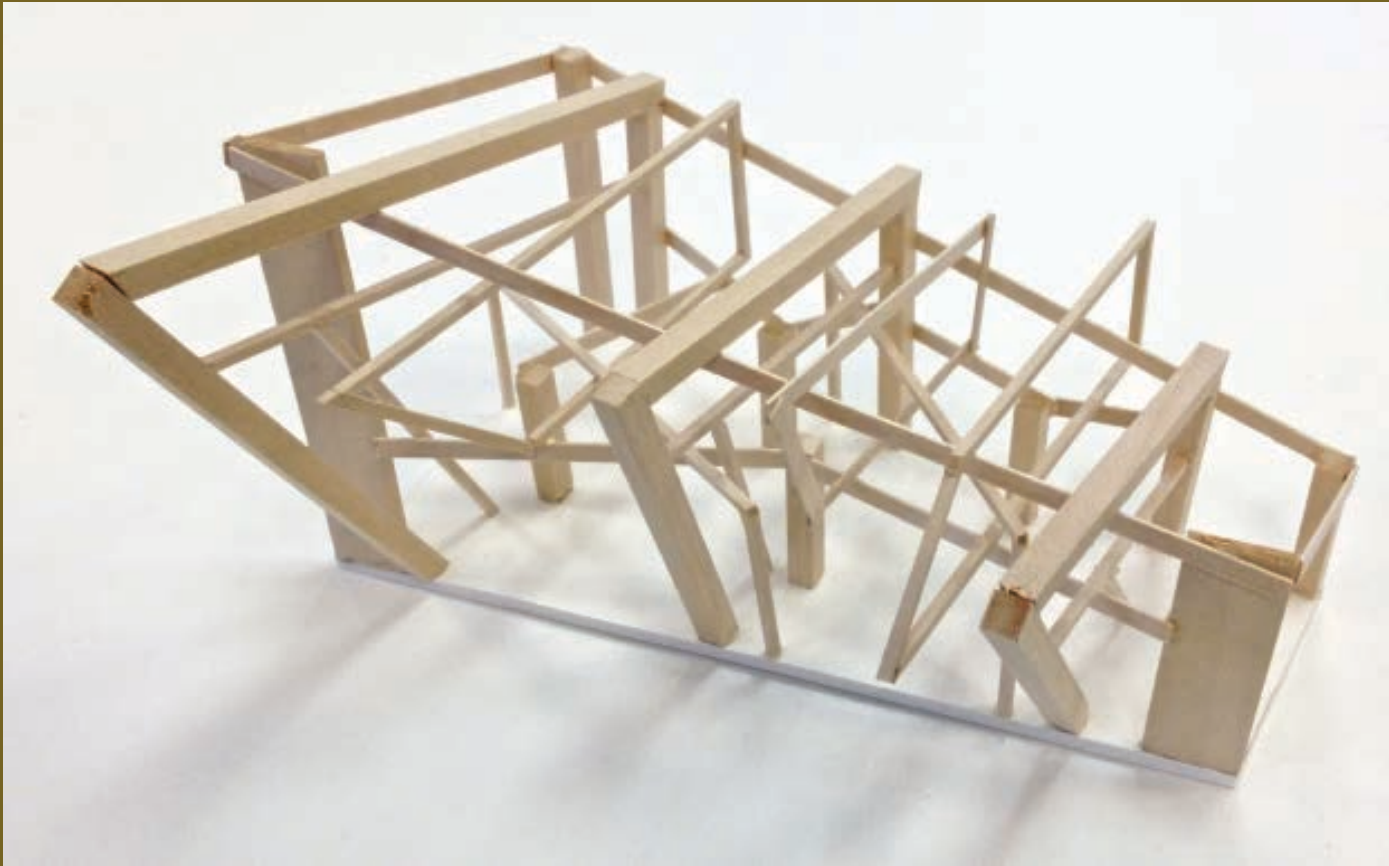


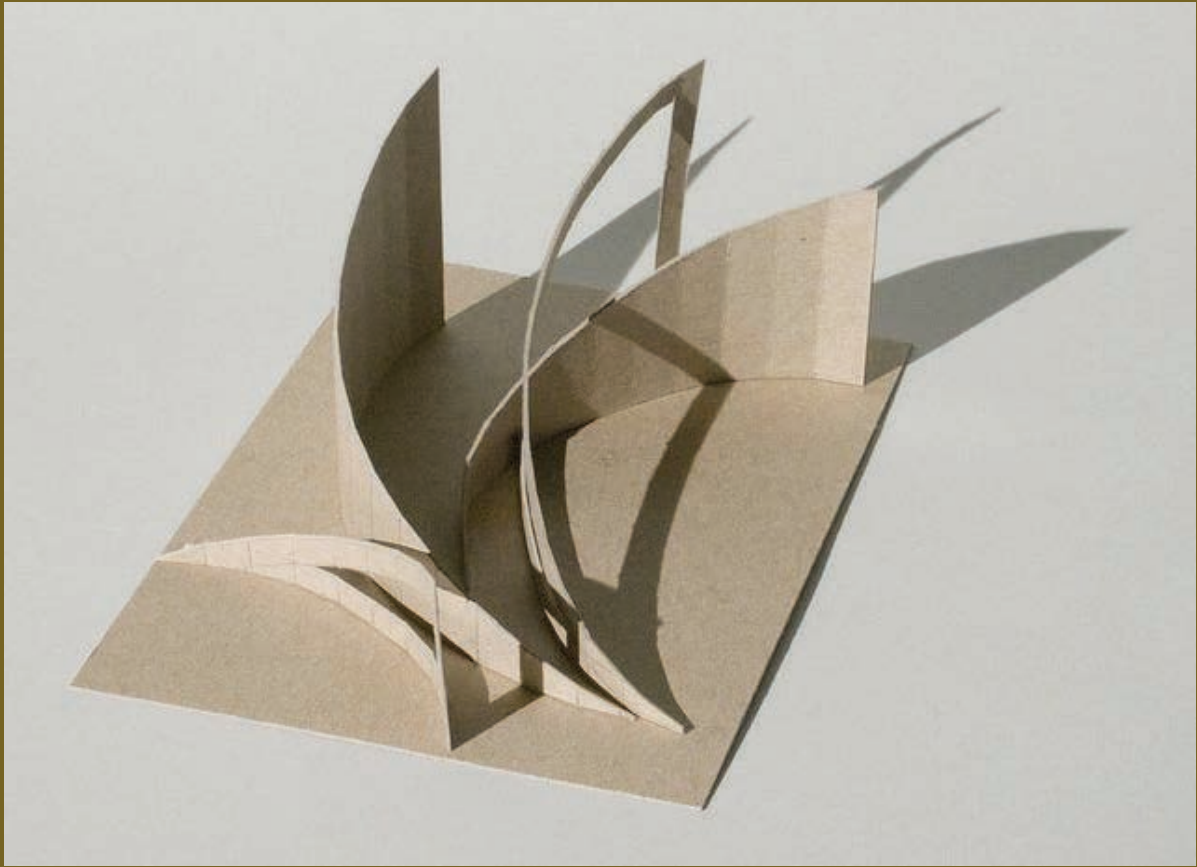


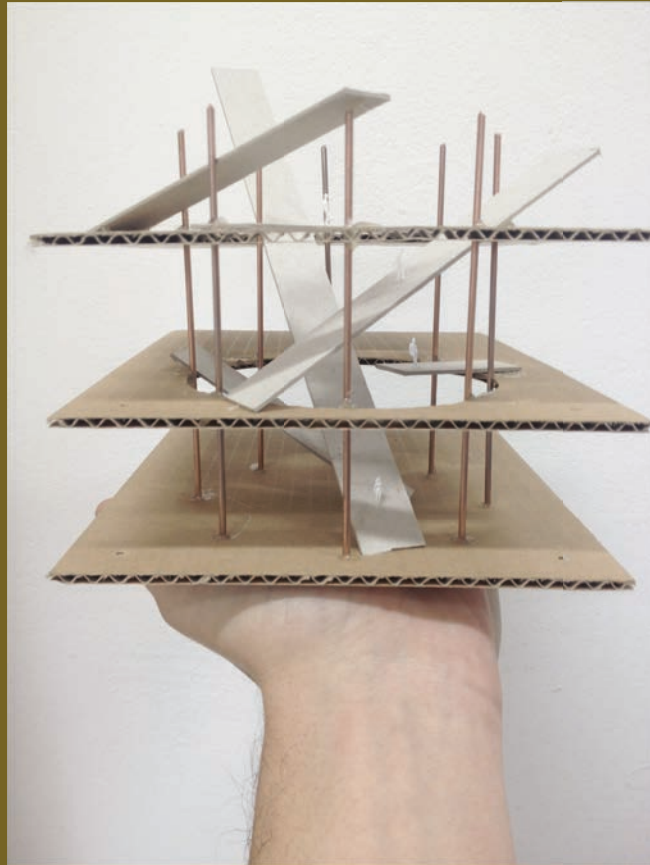
Google 'Laser Cut' sheet materials'



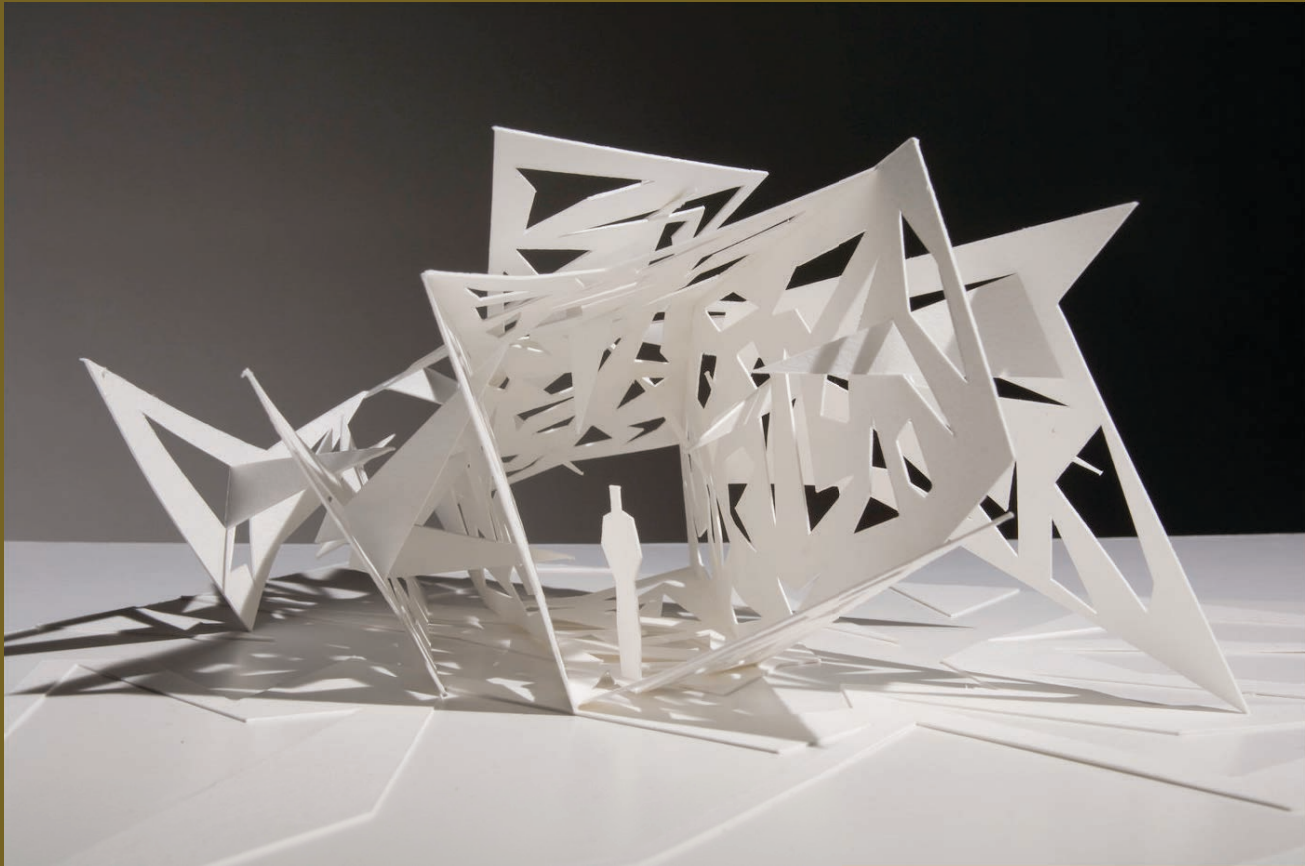




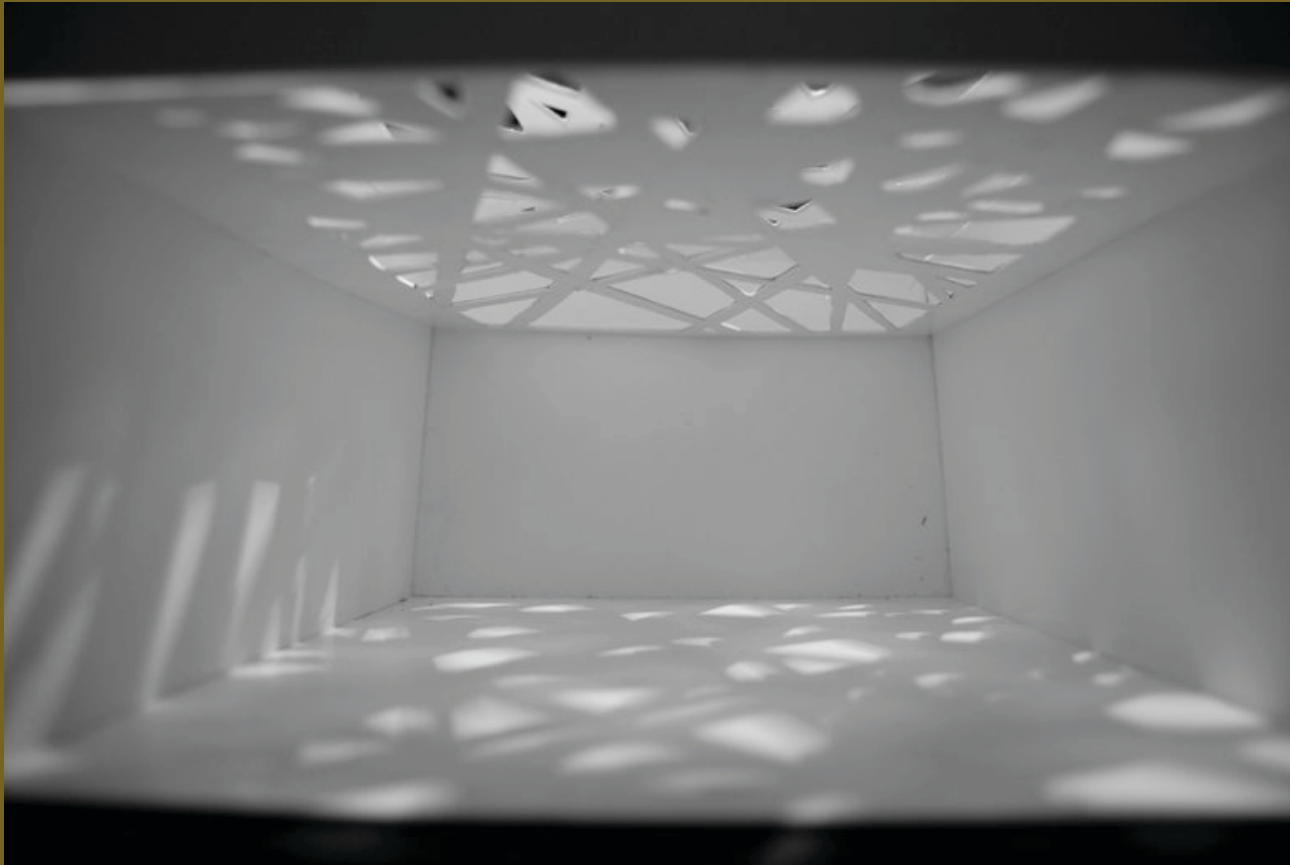




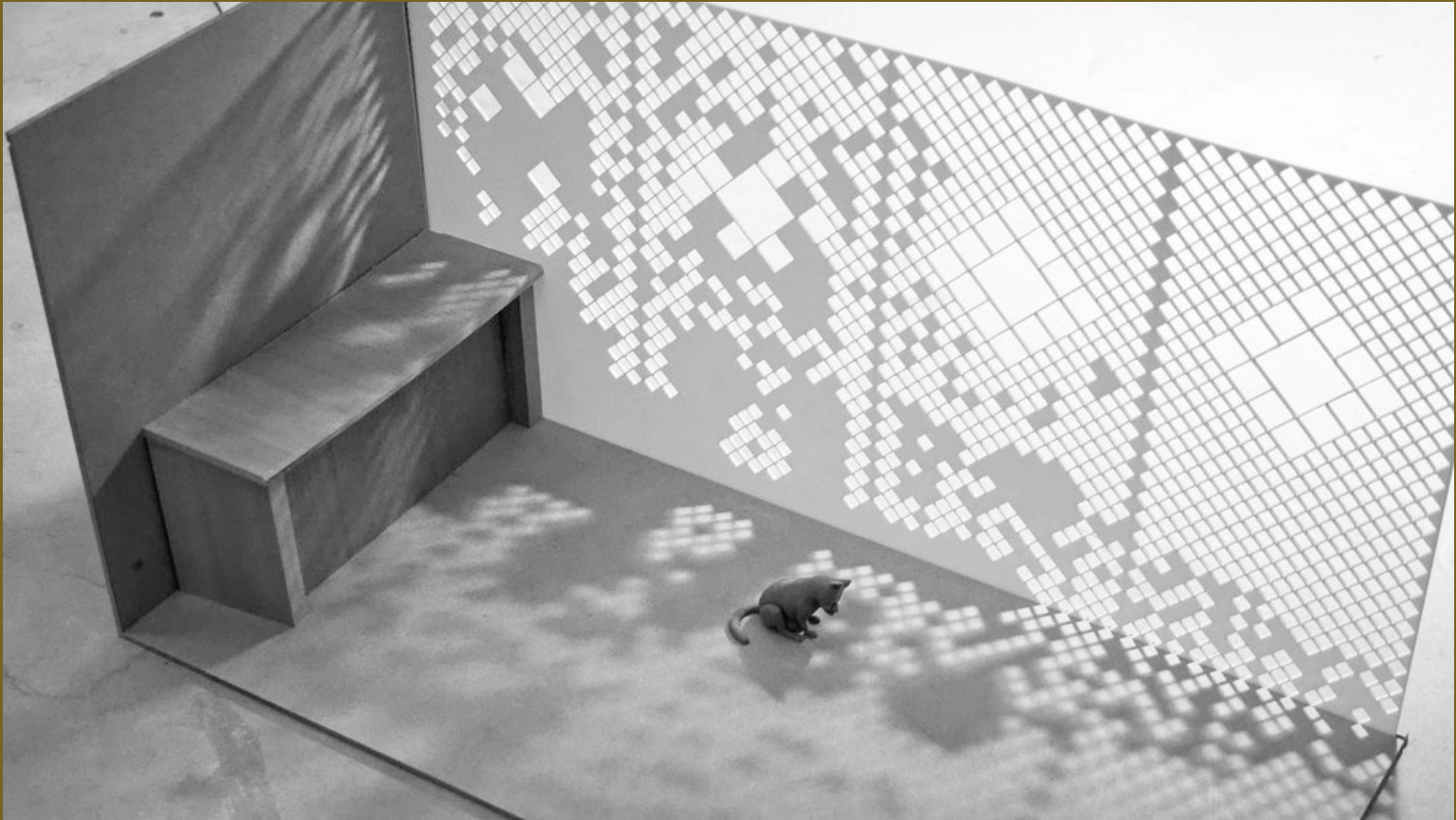




A way to study light in an interior space



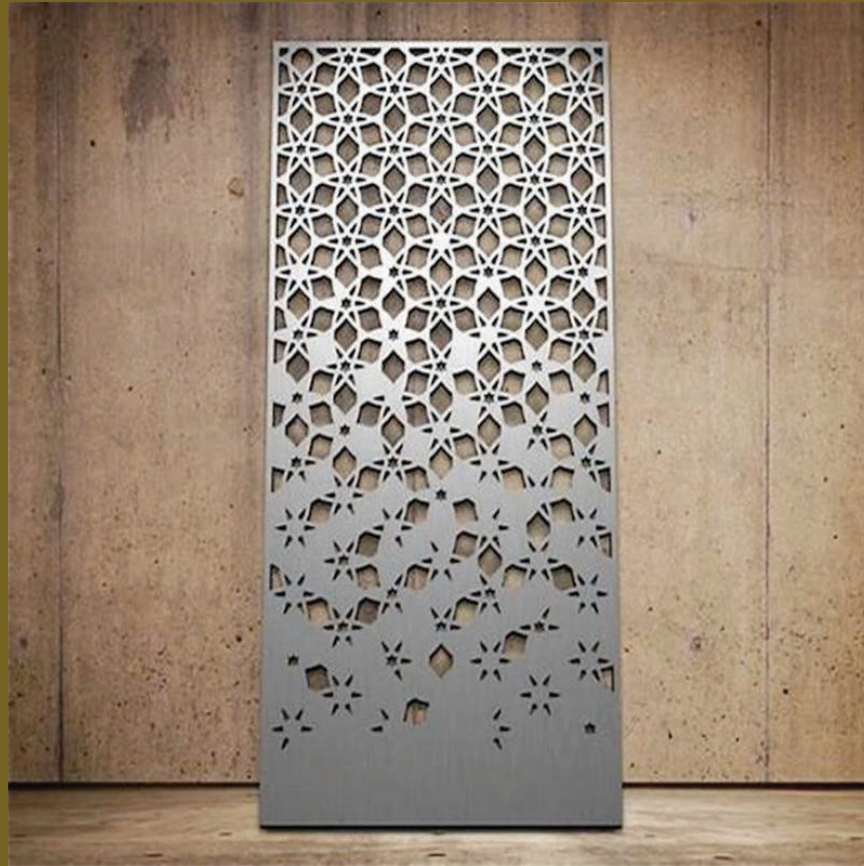
Laser cut panels used in a wall/screen



Laser cut panel



Laser cut panel



Laser cut panel



Laser cut panel



Laser cut panel



Laser cut panel



A wood bookcase 1925



A laser cut bookcase 2020



A laser cut bookcase 2020



A laser cut bookcase 2020



Good designers create for now, for today, 2020
not for 1920.

- There are fabulous materials and technologies available to us in today's world!
- Explore and become more creative!